



Chimera S&P US Shariah Growth ETF - Accumulating

MARCH 2025 FACT SHEET

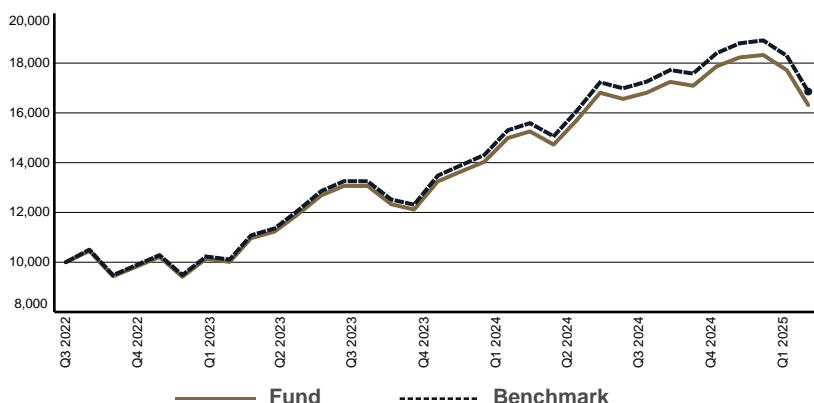
This is a marketing communication

Lunate

FUND OVERVIEW

Chimera S&P US Shariah Growth ETF - Accumulating (USGRWTH) is an exchange traded fund that seeks to provide investment returns, before fees and other costs, that closely tracks the performance of the S&P 500 U.S. Shariah Top 30 35/20 Capped Index. The fund allows a single access point to the US equity markets. The dividends received by the fund will be reinvested.

GROWTH OF 10,000 SINCE INCEPTION



PERFORMANCE

	1 Month	3 Month	YTD	1 Year	3 Year	5 Year	Since Inception*
ETF	-7.89%	-10.49%	-10.49%	6.95%	N/A	N/A	63.16%
Benchmark	-7.84%	-10.32%	-10.32%	8.13%	35.89%	157.74%	68.56%

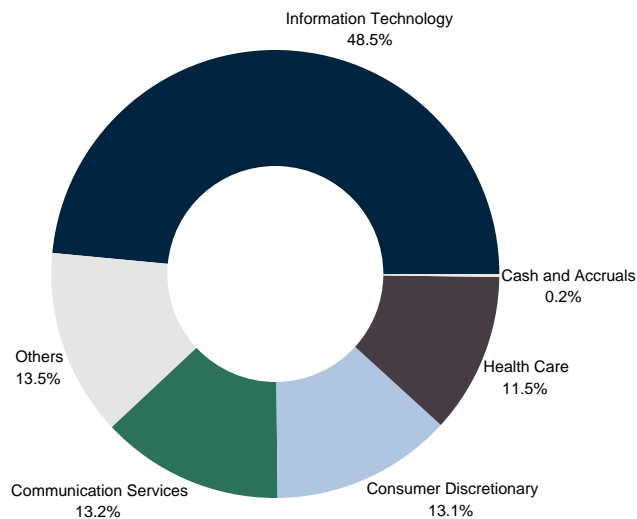
Performance quoted represents past performance, which is no guarantee of future results. Performance returns for periods of less than one year are not annualized and have been calculated based on changes in the net asset value of the fund rather than the last quoted price. Performance return reflect combined capital growth and distribution performance assuming all distributions are reinvested; and are shown net of fees.

* These returns, for both the fund and the index, are calculated from inception of the fund on 30th June 2022.

Important Information: The value of your investment and any income from it will vary and your initial investment amount cannot be guaranteed. ETFs trade on exchanges like stocks and are bought and sold at market prices which may be different to the net asset values of the ETFs.

Net Asset Value calculated by Lunate Capital LLC as the Fund Administrator have been reconciled against the Net Asset Values produced by BNY Mellon as a fund service provider. All financial information of the fund has been cross verified by Lunate Capital LLC against information produced by BNY Mellon as a fund service provider.

SECTOR ALLOCATION



KEY FACTS

Asset Class	Equity
Fund Base Currency	USD
Share Class Currency	AED
Inception Date	30th Jun 2022
Benchmark	S&P 500 U.S. Shariah Top 30 35/20 Capped Index
ISIN	AEC01080C228
Total Expense Ratio	1.00%
Dividend Treatment	Accumulating
Domicile	UAE
Methodology	Replicating
Product Structure	Physical
Rebalance Frequency	Quarterly
Management Company	Lunate Capital LLC
NAV (AED)	5.993
AUM (AED mln)	14.98
Shares Outstanding	2,500,000
Number Of Holdings	30
ETF's Distribution Yield	N/A
Benchmark Ticker	SPSHXCAN
Type	Umbrella
Total Market Cap (USD bn)	25,090.1
P/E	33.68x
P/B	23.01x
ROE	68.24%

DEALING INFORMATION

Exchange	Abu Dhabi Securities Exchange
Ticker	USGRWTH
Bloomberg Ticker	USGRWTH
Reuters RIC	CHUSSHG.AD
CUSIP	M2366F148
Trading Currency	AED
Trading Hours	10am - 3pm GST
Settlement	T + 2

TOP 10 HOLDINGS

Apple Inc	15.18%
Microsoft Corp	12.65%
NVIDIA Corp	12.09%
Amazon.com Inc	8.16%
Meta Platforms Inc	5.71%
Alphabet Inc CLS A	4.11%
Broadcom Inc	3.57%
Alphabet Inc CLS C	3.36%
Tesla Inc	3.26%
Eli Lilly and Co	2.96%



Chimera S&P US Shariah Growth ETF - Accumulating

MARCH 2025 FACT SHEET

This is a marketing communication

Lunate

GLOSSARY

Total Expense Ratio (TER): A measure of the total costs associated with managing and operating the fund. The TER consists primarily of the management fee (which covers costs for maintaining the fund such as trustee, custodial, and accounting fees) plus other operating expenses. It is expressed as a percentage of the fund's total net asset value.

ETF's Distribution Yield: The Distribution Yield is calculated by taking the sum of distributions made during the trailing 12 months divided by the most recent month-end Net Asset Value (NAV). Please note that this yield does not necessarily reflect the yield that an investor will receive, and distributions may vary from time to time

Product structure: Indicates whether the fund buys the actual underlying securities in the index (i.e. Physical) or whether the fund gains exposure to those securities by buying derivatives, such as swaps (known as 'synthetic').

Methodology: Indicates whether the product is holding all index securities in the same weight as the index (replicating) or whether an optimised subset of index securities is used (optimised/sampled) in order to efficiently track index performance.

Market capitalisation: The aggregate value of a stock calculated by multiplying the number of shares outstanding by the current price. For the fund, this is the sum of the market capitalisation of each stock held by the fund.

Weighted average market cap: The weighted average market capitalisation of all stocks held by the fund.

Price earnings ratio (P/E): The share price of a stock divided by its earnings per share (EPS) over the past year. For the fund, this is the weighted average P/E ratio of all stocks held in the fund. Stocks with negative P/E ratios are excluded from the calculation.

Price book ratio (P/B): The share price of a stock divided by its book value per share. For the fund, this is the weighted average P/B ratio of all stocks held in the fund.

Return on equity: This is the amount of net income of a company expressed as a percentage of shareholders' equity. It reveals how much profit a company generates with the money shareholders have invested. For the fund, this is the weighted average return on equity of all stocks held in the fund. Stocks with a negative return on equity are excluded from the calculation.

Earnings growth rate: A measure of growth in a company's net income over a specific period of time. For the fund, this is the weighted average growth rate of all stocks held in the fund. Stocks with a negative growth rate are excluded from the calculation.

DISCLAIMER

Chimera S&P US Shariah Growth ETF – Accumulating (USGRWTH) is an Exchange Traded Fund ("ETF") developed solely for Lunate Capital LLC (together with its affiliates "Lunate"). Investors should carefully consider the investment objectives and risks as well as charges and expenses related to USGRWTH before investing. The summary and full prospectuses contain this and other information about USGRWTH. Read the prospectus carefully before investing. Investment in the products mentioned in this document may not be suitable for all investors.

This document is for informational purposes only. Any unauthorized use is strictly prohibited. It is educational in nature and is not, nor is it intended to be, a recommendation or advice for any specific investment product, strategy, ETF, or other purpose. Nor is this document an offer to sell or a solicitation of an offer to buy any securities, product, or service. Any examples herein are for illustrative purposes only. Prior to making any investment or financial decisions, an investor should see individualized advice from an authorized professional.

The performance quoted is past performance and is not a guarantee of future results. Investment return and principal value will fluctuate, so that an investor's units in the ETF, when sold or redeemed, may be worth more or less than the original cost. Current performance may be higher or lower than that quoted. ETFs have fees that reduce their performance, indexes do not. Investors cannot invest directly in an index. Index performance and results are unmanaged and do not reflect the deduction of any fees or expenses applicable for the ETF. The index performance reflects all items of income, gain and loss and the reinvestment of dividends and other income. The price of the investments may go up or down and the investor may not get back the amount invested. Your income is not fixed and may fluctuate. ETF returns do not reflect the brokerage fees or the bid/ask spread that investors pay to buy and sell ETF securities on the Abu Dhabi Securities Exchange ("ADX").

Chimera S&P US Shariah Growth ETF – Accumulating is managed by Lunate Capital LLC with the objective to track the S&P 500 U.S. Shariah Top 30 35/20 Capped Index, an unmanaged index provided by of S&P Dow Jones Indices LLC ("SPDJI"). This document may not be distributed without written authorization from Lunate.

No representation, warranty, or condition, express or implied, is made by or on behalf of Lunate or USGRWTH (or any affiliates) as to the accuracy or completeness of any information herein. Lunate and USGRWTH (and their affiliates) are not responsible, nor do they accept any liability, for any inaccuracies in or omissions related to this document or liability for any loss or damage howsoever caused arising directly indirectly from the use or misuse of this information, services and materials. All such information, services and materials are provided "as is" and "as available" without warranty of any kind.

S&P 500 U.S. Shariah Top 30 35/20 Capped Index is the exclusive property of S&P Opco, LLC, a subsidiary of SPDJI and/or its affiliates. Lunate has contracted with SPDJI to calculate and maintain the Index. Redistribution, reproduction and/or photocopying in whole or in part are prohibited without written permission of SPDJI. All rights reserved.

S&P(R) is a registered trademark of Standard & Poor's Financial Services LLC and Dow Jones(R) is a registered trademark of Dow Jones Trademark Holdings LLC. Neither SPDJI, its affiliates nor their third-party licensors make any representation or warranty, express or implied, as to the ability of any index to accurately represent the asset class or market sector that it purports to represent, nor shall they have any liability for any errors, omissions, or interruptions of any index or the data included therein. For more information on any SPDJI's or its affiliate's indices or its custom calculation services, please visit www.spdji.com.