



Chimera S&P UAE UCITS ETF - Accumulating

NOVEMBER 2024 FACT SHEET

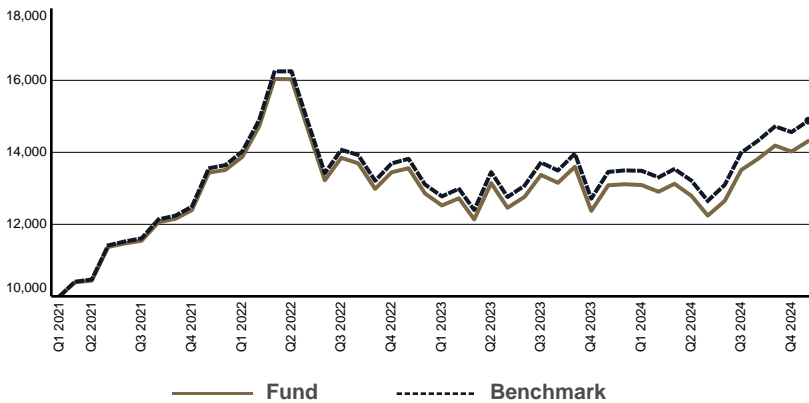
This is a marketing communication

Lunate

FUND OVERVIEW

Chimera S&P UAE UCITS ETF - Accumulating (CHAE) is an exchange traded fund that seeks to provide investment returns, before fees and other costs, that closely track the performance of the S&P UAE BMI Liquid Capped 20/35 Index. CHAE allows a single access point to the United Arab Emirates equity markets. The dividends received by the fund will be reinvested.

GROWTH OF 10,000 SINCE INCEPTION



PERFORMANCE

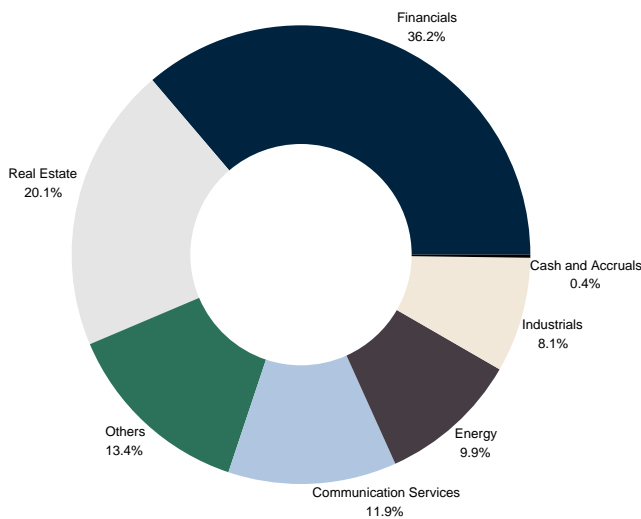
| | 1 Month | 3 Month | YTD | 1 Year | 3 Year | 5 Year | Since Inception* |
|-----------|---------|---------|--------|--------|--------|--------|------------------|
| ETF | 2.10% | 3.57% | 9.16% | 9.40% | 6.52% | N/A | 43.15% |
| Benchmark | 2.19% | 3.86% | 10.25% | 10.58% | 9.75% | 61.57% | 48.80% |

Performance quoted represents past performance, which is no guarantee of future results. Performance returns for periods of less than one year are not annualized and have been calculated based on changes in the net asset value of the fund rather than the last quoted price. Performance return reflect combined capital growth and distribution performance assuming all distributions are reinvested; and are shown net of fees.

* These returns, for both the fund and the index, are calculated from inception of the fund on 23rd February 2021.

Important Information: The value of your investment and any income from it will vary and your initial investment amount cannot be guaranteed. ETFs trade on exchanges like stocks and are bought and sold at market prices which may be different to the net asset values of the ETFs.

SECTOR ALLOCATION



KEY FACTS

| | |
|---------------------------|---|
| Asset Class | Equity |
| Fund Base Currency | AED |
| Share Class Currency | AED |
| Inception Date | 23rd Feb 2021 |
| Benchmark | S&P UAE BMI Liquid Capped 20/35 Index (NTR) |
| ISIN | IE00BKDMN692 |
| Total Expense Ratio | 1.00% |
| Dividend Treatment | Accumulating |
| Domicile | Ireland |
| Methodology | Replicating |
| Product Structure | Physical |
| Rebalance Frequency | Quarterly |
| Management Company | Fundrock Management Co |
| Investment Manager | Lunate Capital Limited |
| NAV (AED) | 5.254 |
| AUM (AED mln) | 2.63 |
| Shares Outstanding | 500,000 |
| Number Of Holdings | 30 |
| ETF's Distribution Yield | N/A |
| Benchmark Ticker | SPUAECAN |
| Type | UCITS |
| Total Market Cap (AED bn) | 1,682.4 |
| P/E | 11.21x |
| P/B | 4.85x |
| ROE | 27.17% |

DEALING INFORMATION

| | |
|------------------|------------------------|
| Exchange | Dubai Financial Market |
| Ticker | CHAE |
| Bloomberg Ticker | CHAE |
| Reuters RIC | CHAE.DU |
| CUSIP | G21026110 |
| Trading Currency | AED |
| Trading Hours | 10am - 3pm GST |
| Settlement | T + 2 |

TOP 10 HOLDINGS

| | |
|--|--------|
| Emaar Properties PJSC | 12.16% |
| Emirates Telecommunications Group Company PJSC | 11.85% |
| First Abu Dhabi Bank PJSC | 11.64% |
| Emirates NBD Bank PJSC | 10.14% |
| Abu Dhabi Commercial Bank PJSC | 6.04% |
| Aldar Properties PJSC | 5.85% |
| ADNOC Gas PLC | 5.53% |
| Dubai Electricity and Water Authority PJSC | 4.89% |
| Dubai Islamic Bank Public JSC | 4.05% |
| Abu Dhabi Islamic Bank PJSC | 3.90% |



GLOSSARY

Total Expense Ratio (TER): A measure of the total costs associated with managing and operating the fund. The TER consists primarily of the management fee (which covers costs for maintaining the fund such as trustee, custodial, and accounting fees) plus other operating expenses. It is expressed as a percentage of the fund's total net asset value.

ETF's Distribution Yield: The Distribution Yield is calculated by taking the sum of distributions made during the trailing 12 months divided by the most recent month-end Net Asset Value (NAV). Please note that this yield does not necessarily reflect the yield that an investor will receive, and distributions may vary from time to time

Product structure: Indicates whether the fund buys the actual underlying securities in the index (i.e. Physical) or whether the fund gains exposure to those securities by buying derivatives, such as swaps (known as 'synthetic').

Methodology: Indicates whether the product is holding all index securities in the same weight as the index (replicating) or whether an optimised subset of index securities is used (optimised/sampled) in order to efficiently track index performance.

Market capitalisation: The aggregate value of a stock calculated by multiplying the number of shares outstanding by the current price. For the fund, this is the sum of the market capitalisation of each stock held by the fund.

Weighted average market cap: The weighted average market capitalisation of all stocks held by the fund.

Price earnings ratio (P/E): The share price of a stock divided by its earnings per share (EPS) over the past year. For the fund, this is the weighted average P/E ratio of all stocks held in the fund. Stocks with negative P/E ratios are excluded from the calculation.

Price book ratio (P/B): The share price of a stock divided by its book value per share. For the fund, this is the weighted average P/B ratio of all stocks held in the fund.

Return on equity: This is the amount of net income of a company expressed as a percentage of shareholders' equity. It reveals how much profit a company generates with the money shareholders have invested. For the fund, this is the weighted average return on equity of all stocks held in the fund. Stocks with a negative return on equity are excluded from the calculation.

Earnings growth rate: A measure of growth in a company's net income over a specific period of time. For the fund, this is the weighted average growth rate of all stocks held in the fund. Stocks with a negative growth rate are excluded from the calculation.

DISCLAIMER

Chimera S&P UAE UCITS ETF – Accumulating ("CHAE") is an Exchange Traded Fund ("ETF") developed solely for Lunate Capital Limited (together with its affiliates "Lunate") is a sub-fund of Chimera UCITS ICAV (the "ICAV"), an investment company organized under the laws of Ireland as an open-ended Irish collective asset-management. The ICAV is governed by the European Communities (Undertakings for Collective Investment in Transferable Securities Regulations 2011) Law and qualifies as a UCITS. Investors should carefully consider the investment objectives and risks as well as charges and expenses related to CHAE before investing. Investors should be aware of the following risks before making an investment in CHAE that CHAE may be affected by: (i) Equity Risk - Shares of companies are generally considered high risk investments and may result in fluctuations in the value of CHAE due to external factors; (ii) Counterparty Risk: CHAE is subject to the risk that third parties with which CHAE may transact may go bankrupt or fail to pay money due to CHAE or return property belonging to CHAE; (iii) Tracking Error Risk: CHAE's performance may not exactly track its benchmark index. This can result from market fluctuations, changes in the composition of the benchmark index, transaction costs, the costs of making changes to CHAE's portfolio and other fund expenses; and (iv) Single Country Risk: Where a fund invests primarily in securities in a single country or a small number of countries, it may be subject to a greater level of risk and above average volatility, as compared to investing in a broader range of securities covering multiple countries. The ICAV's prospectus, annual and semi-annual reports, and the key investor information documents ("KIID") are available in English. Please refer to the prospectus of the ICAV and to the KIID before making any final investment decisions.

This document is for informational purposes only. Any unauthorized use is strictly prohibited. It is educational in nature and is not, nor is it intended to be, a recommendation or advice for any specific investment product, strategy, ETF, or other purpose. Nor is this document an offer to sell or a solicitation of an offer to buy any securities, product, or service. Any examples herein are for illustrative purposes only. Prior to making any investment or financial decisions, an investor should see individualized advice from an authorized professional.

The performance quoted is past performance and is not a guarantee of future results. Investment return and principal value will fluctuate, so that an investor's units in the ETF, when sold or redeemed, may be worth more or less than the original cost. Current performance may be higher or lower than that quoted. ETFs have fees that reduce their performance, indexes do not. Investors cannot invest directly in an index. The index performance and results are unmanaged and do not reflect the deduction of any fees or expenses applicable for ETF. The index performance reflects all items of income, gain and loss and the reinvestment of dividends and other income. The price of the investments may go up or down and the investor may not get back the amount invested. Your income is not fixed and may fluctuate. ETF returns do not reflect the brokerage fees or the bid/ask spread that investors pay to buy and sell ETF securities on the Abu Dhabi Securities Exchange ("ADX").

Chimera S&P UAE UCITS ETF – Accumulating is managed by Lunate Capital Limited (together with its affiliates "Lunate") with the objective to track the S&P UAE BMI Liquid 20/35 Capped Index, an unman-aged index provided by of S&P Dow Jones Indices LLC ("SPDJ"). This document may not be distributed without written authorization from Lunate.

Where CHAE is marketed in the EU, the manager of the ICAV may terminate the arrangements for marketing under the denotification process in the new Cross-Border Distribution Directive (Directive EU) 2019/1160.

No representation, warranty, or condition, express or implied, is made by or on behalf of Lunate or CHAE (or any affiliates) as to the accuracy or completeness of any information herein. Lunate and CHAE (and their affiliates) are not responsible, nor do they accept any liability, for any inaccuracies in or omissions related to this document or liability for any loss or damage howsoever caused arising directly indirectly from the use or misuse of this information, services and materials. All such information, services and materials are provided "as is" and "as available" without warranty of any kind.

S&P UAE BMI Liquid 20/35 Capped Index is the exclusive property of S&P Opco, LLC, a subsidiary of SPDJ and/or its affiliates. Lunate has contracted with SPDJ to calculate and maintain the Index. Redistribution, reproduction and/or photocopying in whole or in part are prohibited without written permission of SPDJ. All rights reserved.

S&P(R) is a registered trademark of Standard & Poor's Financial Services LLC and Dow Jones(R) is a registered trademark of Dow Jones Trademark Holdings LLC. Neither SPDJ, its affiliates nor their third-party licensors make any representation or warranty, express or implied, as to the ability of any index to accurately represent the asset class or market sector that it purports to represent, nor shall they have any liability for any errors, omissions, or interruptions of any index or the data included therein. For more information on any SPDJ's or its affiliate's indices or its custom calculation services, please visit www.spdj.com.