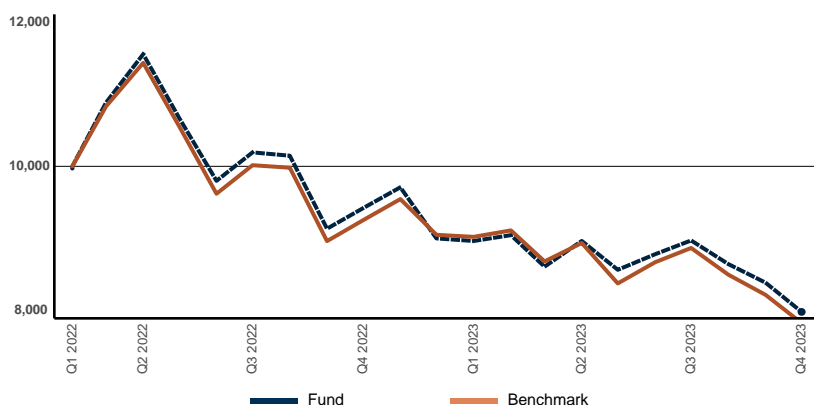




FUND OVERVIEW

Chimera S&P Kuwait Shariah ETF - Income (CHKWSHIN) is an exchange traded fund that seeks to provide investment returns, before fees and other costs, that closely correspond to the performance of the S&P Kuwait Shariah Liquid 35/20 Capped Index. The fund allows a single access point to the Kuwait equity markets. The dividends received by the fund will be distributed semiannually when available.

GROWTH OF AED 10,000 SINCE INCEPTION



Dividend of KWD 0.0034/share : Ex Date on 14th June 2023

PERFORMANCE (%)

	1 Month	3 Month	YTD	1 Year	3 Year	5 Year	Since Inception*
ETF	-4.54%	-10.42%	-10.69%	-14.45%	N/A	N/A	-19.16%
Benchmark	-4.46%	-11.07%	-12.76%	-14.56%	19.32%	29.89%	-20.62%

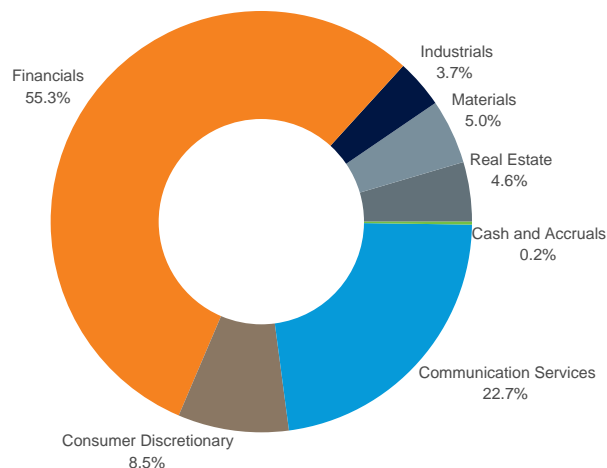
Performance quoted represents past performance, which is no guarantee of future results. Performance returns for periods of less than one year are not annualized and have been calculated based on changes in the net asset value of the fund rather than the last quoted price. Performance return reflects price movements (capital gains or losses) of the underlying securities.

* These returns, for both the fund and the index, are calculated from inception of the fund on 21st Feb 2022.

Important Information: The value of your investment and any income from it will vary and your initial investment amount cannot be guaranteed. ETFs trade on exchanges like stocks and are bought and sold at market prices which may be different to the net asset values of the ETFs.

Net Asset Value calculated by Lunate Capital LLC as the Fund Administrator have been reconciled against the Net Asset Values produced by BNY Mellon as a fund service provider. All financial information of the fund has been cross verified by Lunate Capital LLC against information produced by BNY Mellon as a fund service provider.

SECTOR ALLOCATION



KEY FACTS



Asset Class	Equity
Fund Base Currency	KWD
Share Class Currency	KWD
Inception Date	21st Feb 2022
Benchmark	S&P Kuwait Shariah Liquid 35/20 Capped Index
ISIN	AEC000730056
Total Expense Ratio	1%
Dividend Treatment	Distributing
Domicile	UAE
Methodology	Replicated
Product Structure	Physical
Rebalance Frequency	Quarterly
Management Company	Lunate Capital LLC

NAV (AED)	2.901
AUM (AED mln)	23.21
Shares Outstanding	8,000,000
Number Of Holdings	14
ETF's Distribution Yield	1.40%
Benchmark Ticker	SPKSLCAP
Type	Umbrella
Total Market Cap (KWD bn)	17.3
P/E	18.13x
P/B	2.19x
ROE	16.69%

DEALING INFORMATION

Exchange	Abu Dhabi Securities Exchange
Ticker	CHKWSHIN
Bloomberg Ticker	CHKWSHIN
Reuters RIC	CHKWSHIN.AD
CUSIP	M2366F 122
Trading Currency	AED
Trading Hours	10am - 3pm GST
Settlement	T + 2

TOP 10 HOLDINGS

Kuwait Finance House KSCP	32.44%
Mobile Telecommunications Company KSCP	19.30%
Boubyan Bank KSCP	14.81%
Humansoft Holding Company KSCP	6.03%
Boubyan Petrochemical Company KSCP	4.96%
Warba Bank KSCP	4.18%
Kuwait Telecommunications Company KSCP	3.38%
Commercial Real Estate Co KPSC	2.76%
Kuwait International Bank KSCP	2.68%
Ali Al-Ghanim Sons Automotive Company KSCP	2.48%



GLOSSARY

Total Expense Ratio (TER): A measure of the total costs associated with managing and operating the fund. The TER consists primarily of the management fee (which covers costs for maintaining the fund such as trustee, custodial, and accounting fees) plus other operating expenses. It is expressed as a percentage of the fund's total net asset value.

Dividend Yield: The dividend yield is calculated by taking into account any dividends received in 2023, adjusted for the fund's expenses during the same period, and then divided by the most recent month-end Net Asset Value (NAV). Please note that this yield does not necessarily reflect the yield that an investor will receive, and distributions may vary from time to time.

Product structure: Indicates whether the fund buys the actual underlying securities in the index (i.e. Physical) or whether the fund gains exposure to those securities by buying derivatives, such as swaps (known as 'synthetic').

Methodology: Indicates whether the product is holding all index securities in the same weight as the index (replicating) or whether an optimised subset of index securities is used (optimised/sampled) in order to efficiently track index performance.

Market capitalisation: The aggregate value of a stock calculated by multiplying the number of shares outstanding by the current price. For the fund, this is the sum of the market capitalisation of each stock held by the fund.

Weighted average market cap: The weighted average market capitalisation of all stocks held by the fund.

Price earnings ratio (P/E): The share price of a stock divided by its earnings per share (EPS) over the past year. For the fund, this is the weighted average P/E ratio of all stocks held in the fund. Stocks with negative P/E ratios are excluded from the calculation.

Price book ratio (P/B): The share price of a stock divided by its book value per share. For the fund, this is the weighted average P/B ratio of all stocks held in the fund.

Return on equity: This is the amount of net income of a company expressed as a percentage of shareholders' equity. It reveals how much profit a company generates with the money shareholders have invested. For the fund, this is the weighted average return on equity of all stocks held in the fund. Stocks with a negative return on equity are excluded from the calculation.

Earnings growth rate: A measure of growth in a company's net income over a specific period of time. For the fund, this is the weighted average growth rate of all stocks held in the fund. Stocks with a negative growth rate are excluded from the calculation.

DISCLAIMER

Chimera S&P Kuwait Shariah ETF – Income ("ETF") is an exchange traded fund developed solely for Lunate Capital LLC (together with its affiliates "Lunate"). Investors should carefully consider the investment objectives and risks as well as charges and expenses related to the ETF before investing. The summary and full prospectuses contain this and other information about the ETF. Read the prospectus carefully before investing. Investment in the products mentioned in this document may not be suitable for all investors.

This document is for informational purposes only. Any unauthorized use is strictly prohibited. It is educational in nature and is not, nor is it intended to be, a recommendation or advice for any specific investment product, strategy, ETF, or other purpose. Nor is this document an offer to sell or a solicitation of an offer to buy any securities, product, or service. Any examples herein are for illustrative purposes only. Prior to making any investment or financial decisions, an investor should see individualized advice from an authorized professional.

The performance quoted is past performance and is not a guarantee of future results. Investment return and principal value will fluctuate, so that an investor's units in the ETF, when sold or redeemed, may be worth more or less than the original cost. Current performance may be higher or lower than that quoted. ETFs have fees that reduce their performance, indexes do not. Investors cannot invest directly in an index. Index performance and results are unmanaged and do not reflect the deduction of any fees or expenses applicable for the ETF. The index performance reflects all items of income, gain and loss and the reinvestment of dividends and other income. The price of the investments may go up or down and the investor may not get back the amount invested. Your income is not fixed and may fluctuate. ETF returns do not reflect the brokerage fees or the bid/ask spread that investors pay to buy and sell ETF securities on the Abu Dhabi Securities Exchange ("ADX").

Chimera S&P Kuwait Shariah ETF – Income is managed by Lunate Capital LLC with the objective to track the S&P Kuwait Shariah Liquid 35/20 Capped Index, an unmanaged index provided by of S&P Dow Jones Indices LLC ("SPDJ"). This document may not be distributed without written authorization from Lunate.

No representation, warranty, or condition, express or implied, is made by or on behalf of Lunate or the ETF (or any affiliates) as to the accuracy or completeness of any information herein. Lunate and the ETF (and their affiliates) are not responsible, nor do they accept any liability, for any inaccuracies in or omissions related to this document or liability for any loss or damage howsoever caused arising directly indirectly from the use or misuse of this information, services and materials. All such information, services and materials are provided "as is" and "as available" without warranty of any kind.

S&P Kuwait Shariah Liquid 35/20 Capped Index is the exclusive property of S&P Opco, LLC, a subsidiary of SPDJ and/or its affiliates. Lunate has contracted with SPDJ to calculate and maintain the Index. Redistribution, reproduction and/or photocopying in whole or in part are prohibited without written permission of SPDJ. All rights reserved.

S&P(R) is a registered trademark of Standard & Poor's Financial Services LLC and Dow Jones(R) is a registered trademark of Dow Jones Trademark Holdings LLC. Neither SPDJ, its affiliates nor their third-party licensors make any representation or warranty, express or implied, as to the ability of any index to accurately represent the asset class or market sector that it purports to represent, nor shall they have any liability for any errors, omissions, or interruptions of any index or the data included therein. For more information on any SPDJ's or its affiliate's indices or its custom calculation services, please visit www.spdji.com.